

CASE STUDY

Predict Risk, Save Costs

softserve

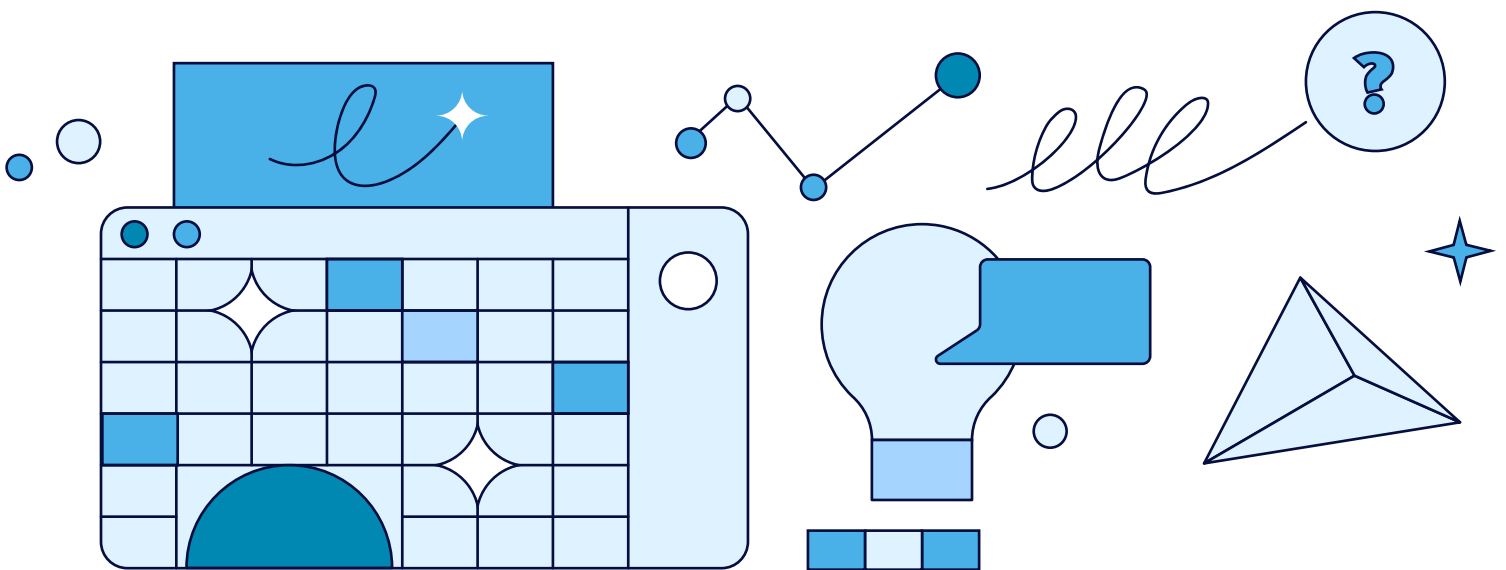
Discover how machine learning solutions can boost your business's bottom line.

SoftServe's client is a worldwide manufacturing company that wanted to improve product lifecycle management, reduce manufacturing time, and save costs associated with utilizing high-risk parts during production. The shortage of just a single part had wide-ranging impacts on the client's ability to manufacture their entire product, endangering the future of their market share.

Rapidly evolving data science technologies have the potential to address the complex issues associated with modern supply chain and risk management. These technologies offer solutions that integrate machine learning (ML) and lead to efficient production, less risk, and increased savings.

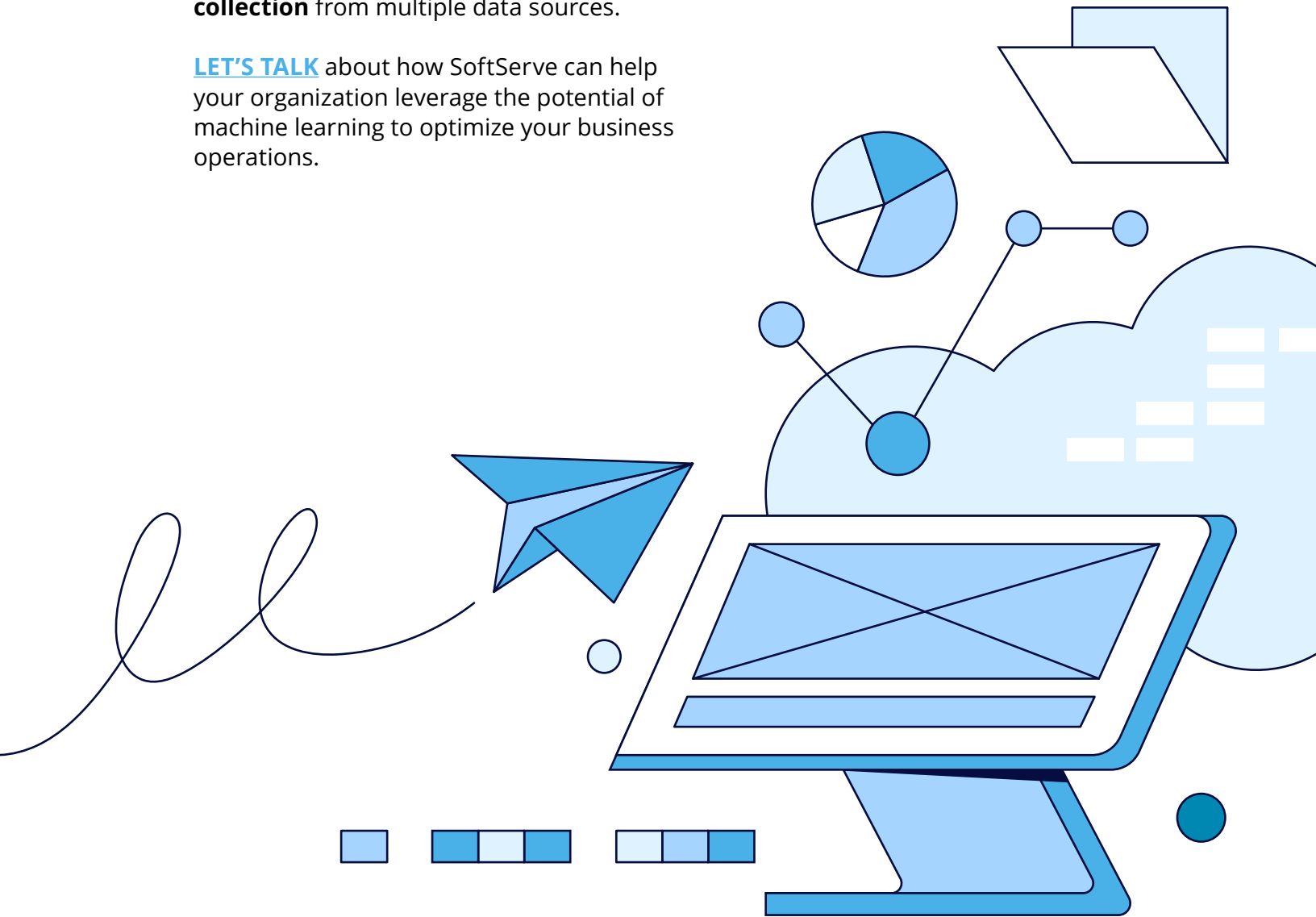
SoftServe's AI team built, trained, and deployed a set of ML models that assess the risk associated with the client's thousands of products and millions of components. SoftServe built an ML solution that delivered:

- **Time savings** by reducing risk assessment in early supply chain stages from hours to minutes
- **Predictability** by optimizing the client's supply chain using decade-long forecasts
- **Stability** in "unexpected event" scenarios by running "what-if" simulation engine results



Leveraging AWS infrastructure and other tools and technologies, SoftServe built a solution that delivered near **real-time prediction workflow** for scoring the risks on incoming bills of materials and **complex training data collection** from multiple data sources.

LET'S TALK about how SoftServe can help your organization leverage the potential of machine learning to optimize your business operations.



ABOUT US

SoftServe is a digital authority that advises and provides at the cutting-edge of technology. We reveal, transform, accelerate, and optimize the way enterprises and software companies do business. With expertise across healthcare, retail, energy, financial services, and more, we implement end-to-end solutions to deliver the innovation, quality, and speed that our clients' users expect.

SoftServe delivers open innovation, from generating compelling new ideas, to developing and implementing transformational products and services.

Our work and client experience is built on a foundation of empathetic, human-focused experience design that ensures continuity from concept to release.

We empower enterprises and software companies to (re)identify differentiation, accelerate solution development, and vigorously compete in today's digital economy. No matter where you are in your journey.

Visit our [website](#), [blog](#), [LinkedIn](#), [Facebook](#), and [Twitter](#) pages.

NORTH AMERICAN HQ

201 W 5th Street, Suite 1550
Austin, TX 78701 USA
+1 866 687 3588 (USA)
+1 647 948 7638 (Canada)

EUROPEAN HQ

30 Cannon Street
London EC4M 6XH
United Kingdom
+44 333 006 4341

APAC HQ

6 Raffles Quay
#14-07
Singapore 048580
+65 31 656 887

info@softserveinc.com
www.softserveinc.com

softserve