

OPTIMIZE SOFTWARE DEVELOPMENT WITH AI




Generative AI is driving unprecedented creativity and efficiency that leads to superior project outcomes, as seen in SoftServe's extensive research.

Benefits of Gen AI in SDLC


Based on 1,500 experiments across various roles within the software development life cycle (SDLC), we found that adopting Gen AI can lead to:




This is due to significant gains in productivity in:




Requirements management



Code and unit testing



Architectural design



Deployment

Overcome implementation challenges

Implementing AI in your organization demands careful planning to address vital considerations such as:

Security	Safeguard sensitive data and protect AI-generated assets
Legal implications	Navigate IP ownership, compliance, and regulatory risks
Infrastructural adjustments	Adapt systems to support AI integration at scale

Recommendations:

- 1

Integrate AI thoughtfully into your SDLC while evaluating IP risks and compliance
- 2

Monitor and adapt AI tools continuously to harness full potential and ensure client trust
- 3

Explore different AI tools, such as GitHub Copilot, and Amazon CodeWhisperer, to identify which aligns best with your organizational needs
- 4

Seek guidance from experts in IT consulting and digital services to navigate these complex business challenges effectively

The future of agentic AI in software development

As Gen AI matures into more autonomous, decision-capable agentic AI that can set goals, adapt to context, and self-correct, the economic dynamics of software development are poised for further change.

Forward-looking organizations that embrace agentic AI will benefit from:



Dynamic resource allocation that reduces human bottlenecks



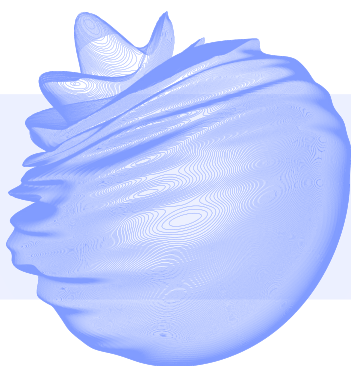
Operational cost reductions through lower coordination overhead



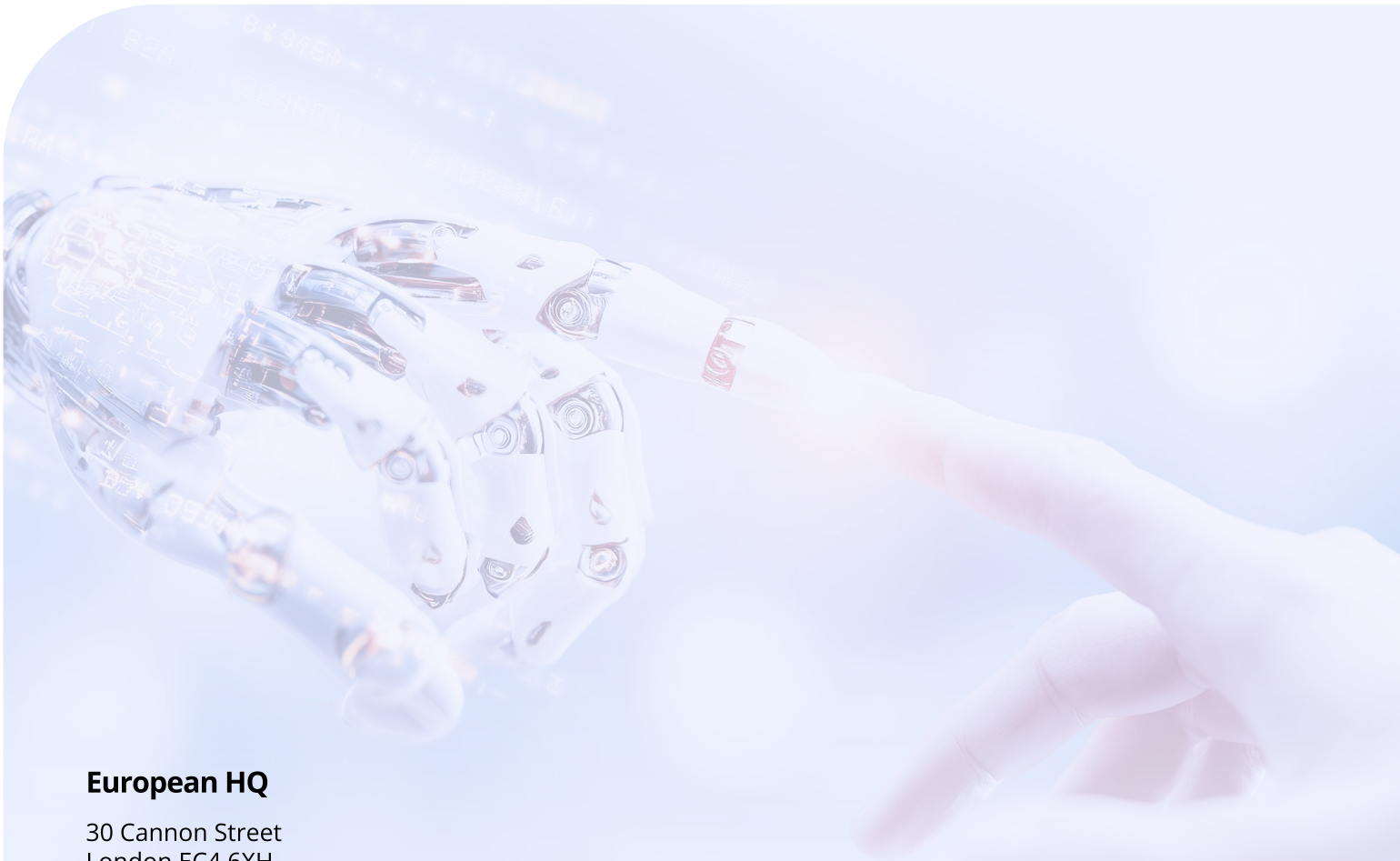
Self-improving development cycles powered by reinforcement learning



Scalable expertise, enabling smaller teams to deliver enterprise-grade outcomes



Visit [SoftServe's Gen AI lab](#) for further insights and take the first step towards a more productive and efficient future in software development.



North American HQ

201 W. 5th Street, Suite 1550
Austin, TX 78701
+1 866 687 3588 (USA)
+1 647 948 7638 (Canada)

European HQ

30 Cannon Street
London EC4 6XH
United Kingdom
+44 333 006 4341

info@softserveinc.com
www.softserveinc.com

softserve