

CASE STUDY

**AVOID SYSTEM
SLOWDOWNS**

softserve

SoftServe helped our client cut ties with entrenched legacy software.

Our client is a manufacturing solutions partner with customers across multiple industries. The client paid significant recurring annual licensing fees and operational costs associated with using both a Pegasystems (Pega) automation solution and Microsoft Office365.

Automation with Pega spanned a large scope of their business processes, but the goal was a complete migration to the Microsoft Power Platform.

SoftServe's solution prioritized business processes, allowing the client to rapidly:

- Optimize license payments
- Reduce their number of vendors
- Unify automation solutions
- Simplify automation infrastructure and maintenance
- Save operational costs

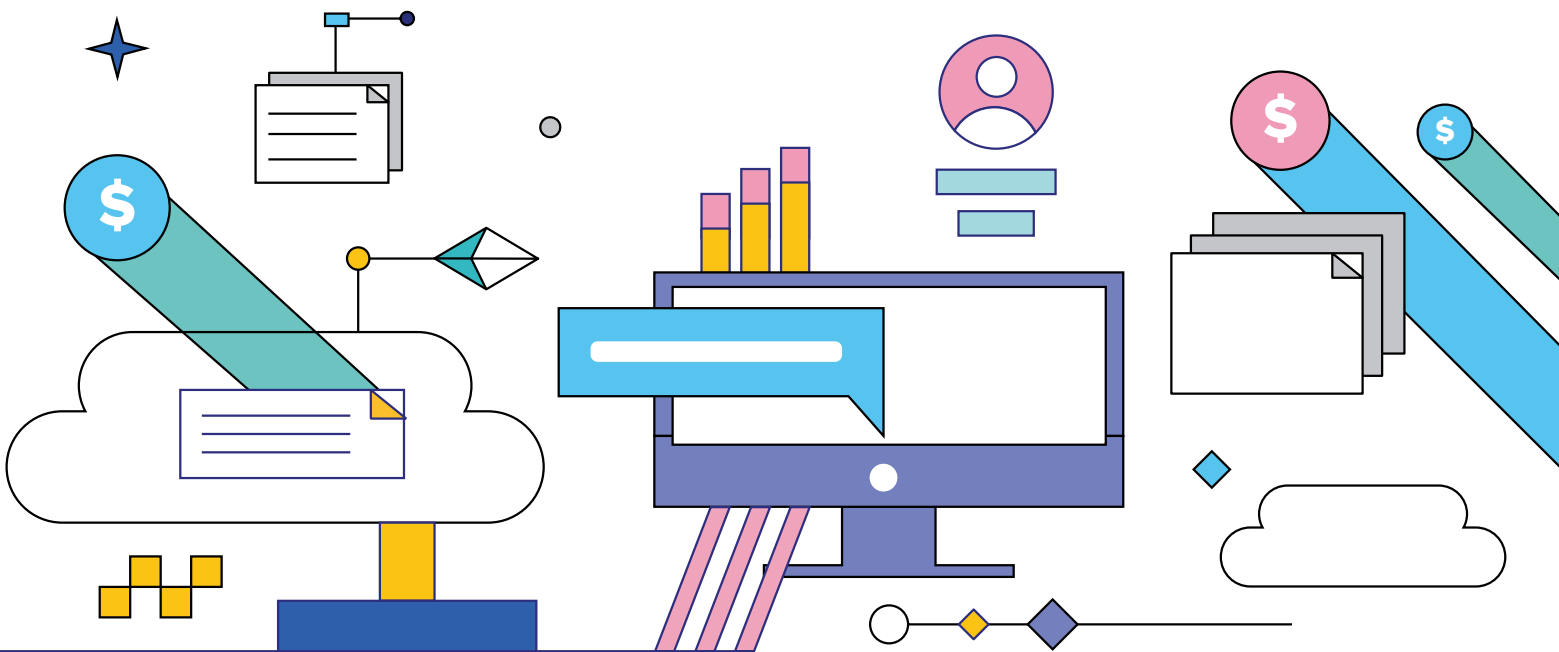
The SoftServe team delivered a proof of concept within a limited timeframe to confirm the strategy and capability of Microsoft Power Platform to perform the large-scale automation the client required.

Regular early demo sessions and subsequent participatory testing facilitated efficient development of automated front-end user interface forms and back-end workflows.

Additionally, we provided:

- Successful initial automation of key business processes
- A roadmap for the remainder of OKRs
- Retention of the look and feel of original applications
- Rapid deployment and adoption

[LET'S TALK](#) about how SoftServe can save your company time and resources by migrating from legacy systems.



ABOUT US

SoftServe is a digital authority that advises and provides at the cutting-edge of technology. We reveal, transform, accelerate, and optimize the way enterprises and software companies do business. With expertise across healthcare, retail, energy, financial services, and more, we implement end-to-end solutions to deliver the innovation, quality, and speed that our clients' users expect.

SoftServe delivers open innovation, from generating compelling new ideas, to developing and implementing transformational products and services.

Our work and client experience is built on a foundation of empathetic, human-focused experience design that ensures continuity from concept to release.

We empower enterprises and software companies to (re)identify differentiation, accelerate solution development, and vigorously compete in today's digital economy. No matter where you are in your journey.

Visit our [website](#), [blog](#), [LinkedIn](#), [Facebook](#), and [Twitter](#) pages.

NORTH AMERICAN HQ

201 W 5th Street, Suite 1550
Austin, TX 78701 USA
+1 866 687 3588 (USA)
+1 647 948 7638 (Canada)

EUROPEAN HQ

30 Cannon Street
London EC4M 6XH
United Kingdom
+44 333 006 4341

APAC HQ

6 Raffles Quay
#14-07
Singapore 048580
+65 31 656 887

info@softserveinc.com
www.softserveinc.com

softserve